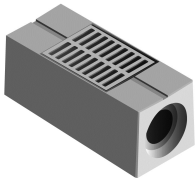


Odwodnienie liniowe



| Profil | Przekrój poprzeczny odpływu | Ciężar | Klasa obciążeń |
|----------|-----------------------------|--------|----------------|
| P20R | 314 | 1380 | D |
| P20RU | 314 | 1390 | D,F |
| P20RUA03 | 314 | 1440 | D |
| P20RUA07 | 314 | 1515 | D |
| P20RUA12 | 314 | 1600 | D |
| P20RUA15 | 314 | 1650 | D |
| P25R | 491 | 1200 | D |
| P25RU | 491 | 1210 | D,F |
| P25RUA03 | 491 | 1430 | D |
| P25RUA07 | 491 | 1500 | D |
| P25RUA12 | 491 | 1590 | D |
| P25RUA15 | 491 | 1640 | D |
| P2030 | 514 | 1560 | D |
| P2030U | 514 | 1560 | D,F |
| P2030A03 | 514 | 1610 | D |
| P2030A07 | 514 | 1670 | D |
| P2030A12 | 514 | 1760 | D |
| P2030A15 | 514 | 1830 | D |
| P3020U | 488 | 1560 | D |
| P3020A03 | 488 | 1625 | D |
| P3020A07 | 488 | 1730 | D |
| P3020A12 | 488 | 1830 | D |
| P3020A15 | 488 | 1900 | D |
| P30R | 706 | 1790 | D |
| P30RU | 706 | 1820 | D,F |
| P30RA03 | 706 | 1890 | D |
| P30RA07 | 706 | 1920 | D |
| P30RA12 | 706 | 2030 | D |
| P30RA15 | 706 | 2100 | D |
| P3040 | 1006 | 2070 | D |
| P3040U | 1006 | 2180 | D,F |
| P3040A03 | 1006 | 2245 | D |
| P3040A07 | 1006 | 2210 | D |
| P3040A12 | 1006 | 2290 | D |
| P3040A15 | 1006 | 2360 | D |
| P2040U | 714 | 2830 | D,F |